

13. Troubleshooting

Indoor unit's LED indication of Corona DC inverter unit

Display	LED STATUS
E0	EEPROM error
E1	outdoor communication error
E2	Zero-crossing examination error
E3	Fan speed beyond control
E5	Outdoor units temp. sensor or connector of temp. sensor is defective
E6	Indoor units temp. sensor or connector of temp. sensor is defective
P0	Inverter module protection
P1	Outdoor voltage protection
P2	Compressor top protection against temperature
P3	Compressor current protection
P5	Outdoor low temp. protection

Indoor unit's LED indication of Alfa DC inverter unit

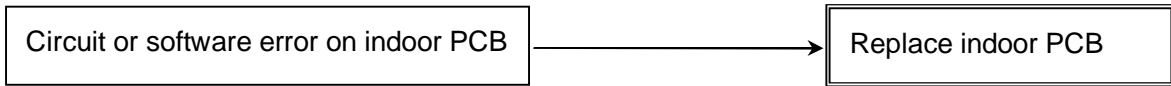
Display	LED STATUS
E0	EEPROM error
E1	outdoor communication error
E2	Zero-crossing examination error
E3	Fan speed beyond control
E5	Outdoor units temp. sensor or connector of temp. sensor is defective
E6	Indoor units temp. sensor or connector of temp. sensor is defective
P0	Inverter module protection
P1	Outdoor voltage protection
P2	Compressor top protection against temperature
P3	Compressor current protection

Indoor unit's LED indication of Vertu DC inverter unit

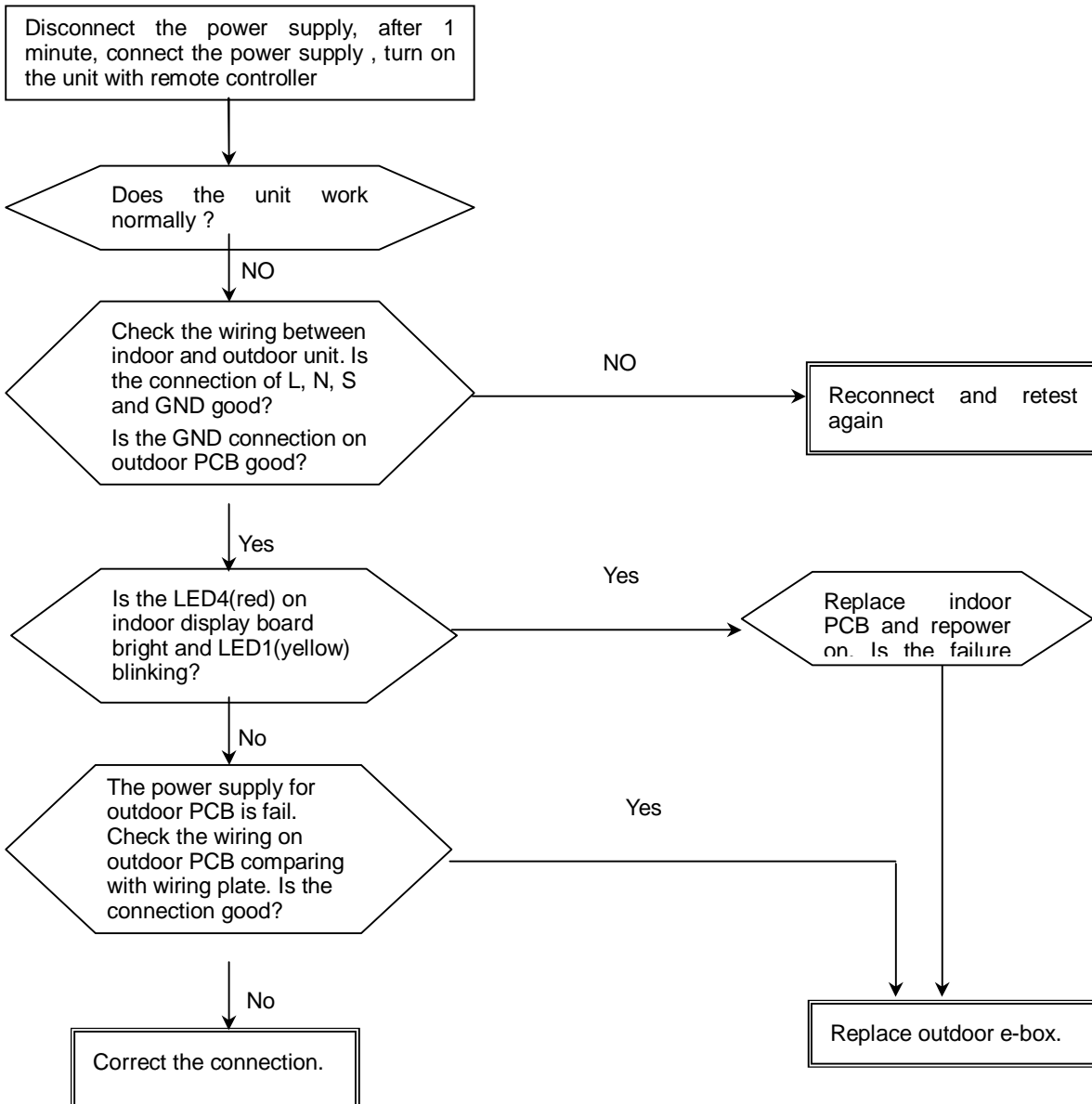
Display	LED STATUS
E0	EEPROM error
E1	outdoor communication error
E2	Zero-crossing examination error
E3	Fan speed beyond control
E5	Outdoor units temp. sensor or connector of temp. sensor is defective
E6	Indoor units temp. sensor or connector of temp. sensor is defective
P0	Inverter module protection
P1	Outdoor unit voltage protection
P2	Compressor top temperature protection
P3	Outdoor low temp. protection
P4	Inverter compressor drive protection
P5	Mode conflict protection

Indoor unit trouble shooting

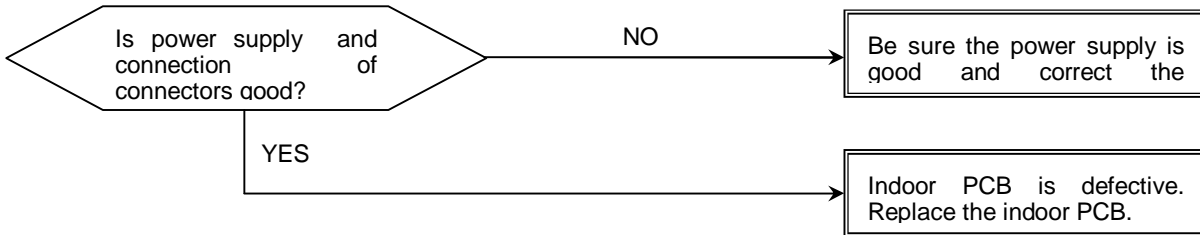
Indoor unit display	LED STATUS
E0	EEPROM error



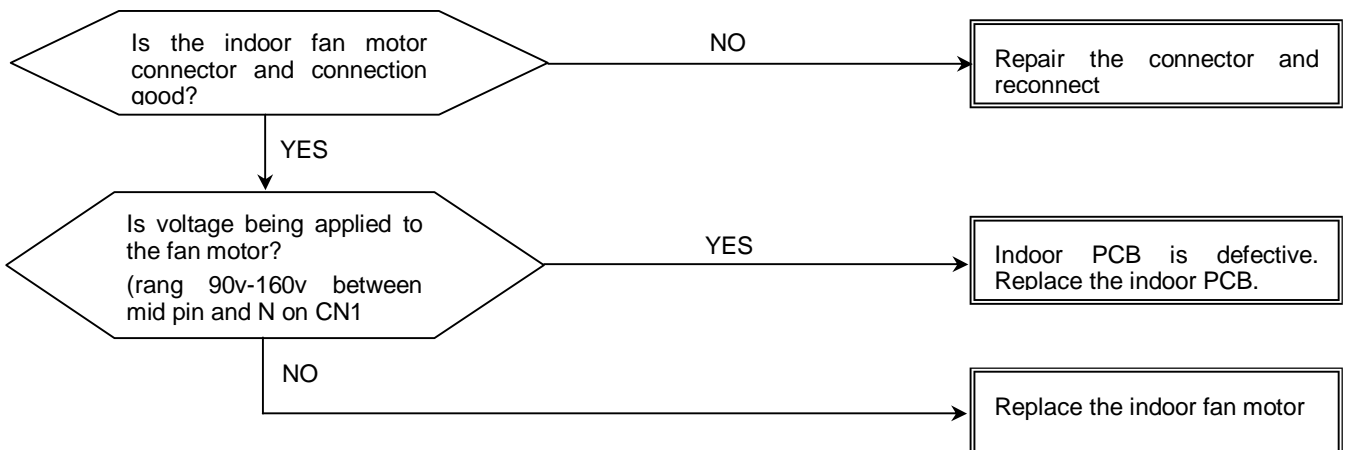
Indoor unit display	LED STATUS
E1	outdoor communication error



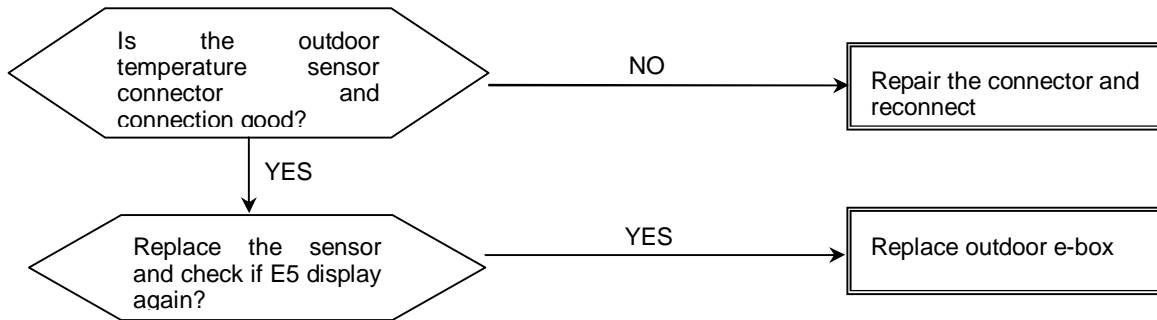
Indoor unit display	LED STATUS
E2	Zero-crossing examination error



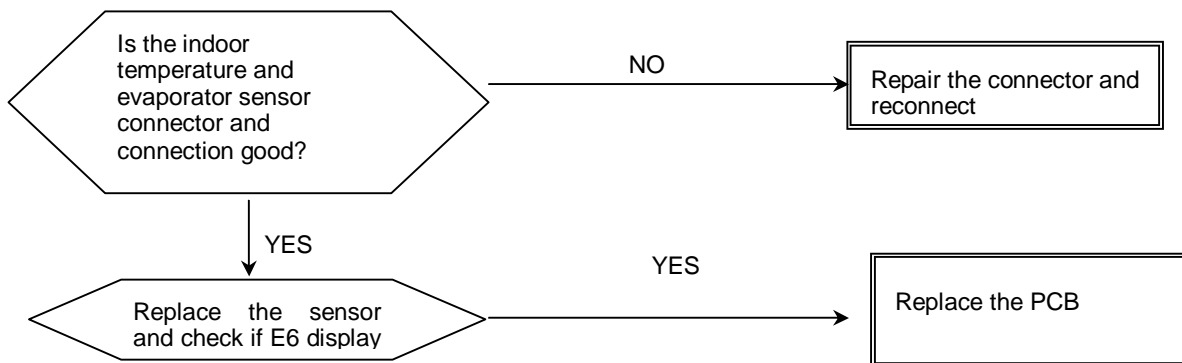
Indoor unit display	LED STATUS
E3	Fan speed beyond control



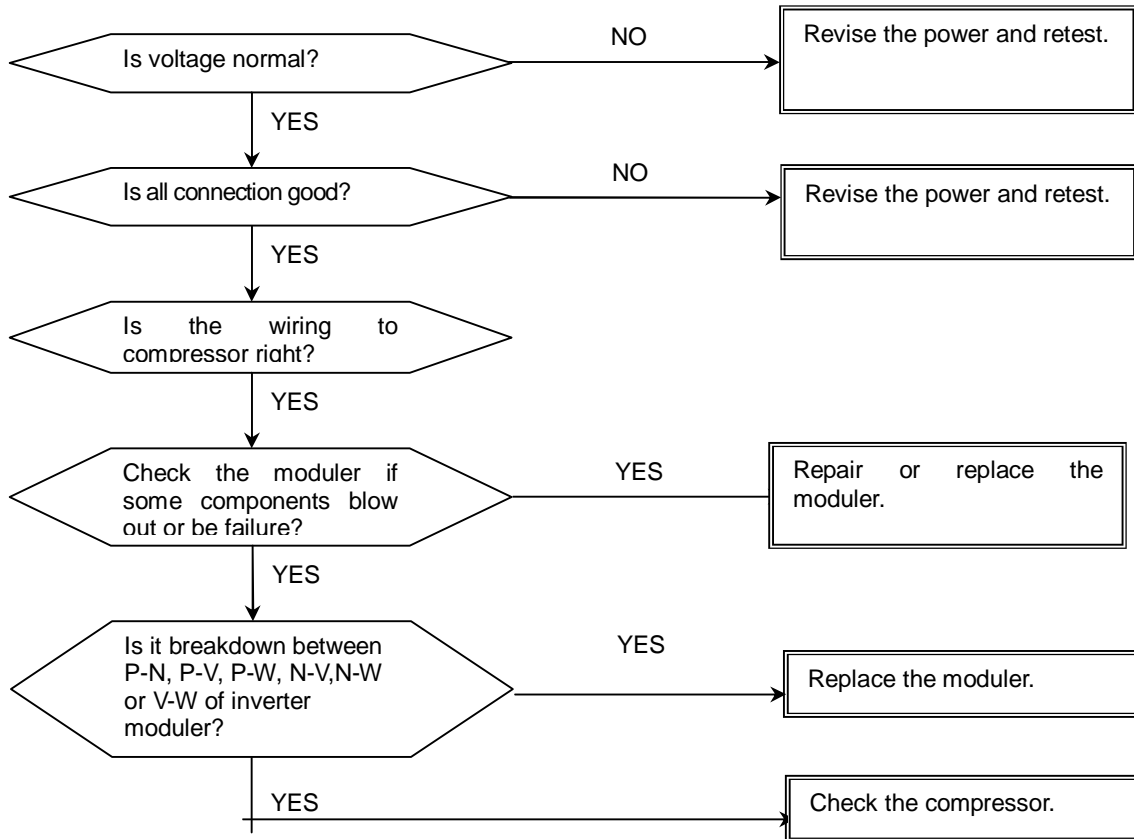
Indoor unit display	LED STATUS
E5	Outdoor units temp. sensor or connector of temp. sensor is defective



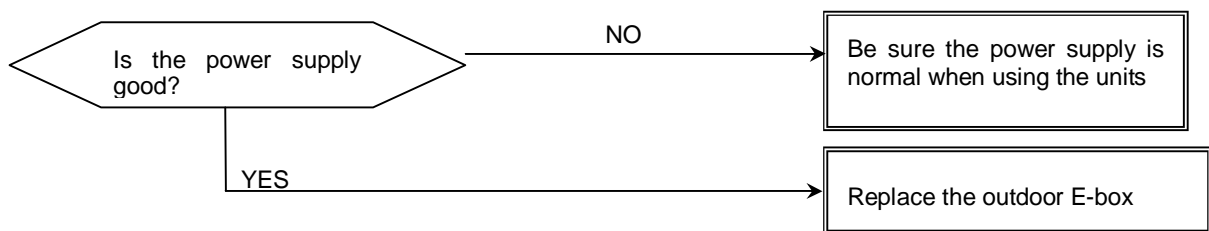
Indoor unit display	LED STATUS
E6	Indoor units temp. sensor or connector of temp. sensor is defective



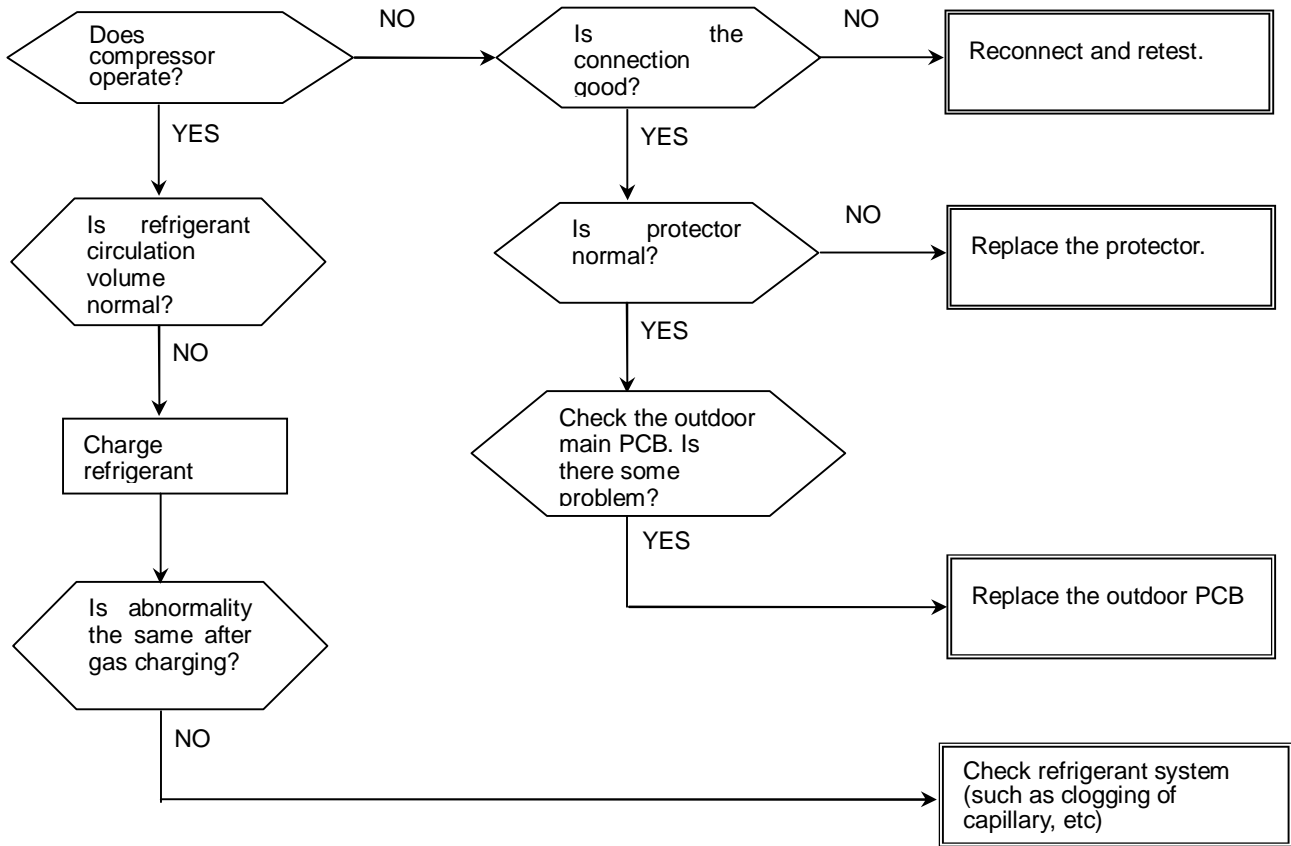
Indoor unit display	LED STATUS
P0	Inverter module protection



Indoor unit display	LED STATUS
P1	Outdoor voltage protection



Indoor unit display	LED STATUS
P2	Compressor top protection against temperature

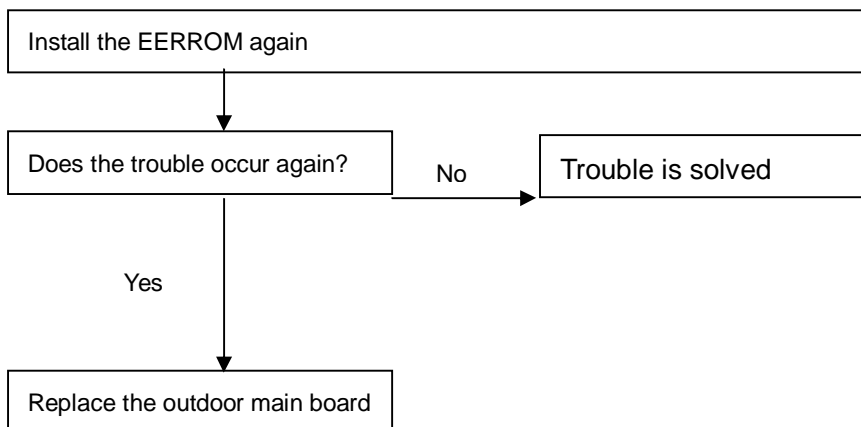


The trouble shooting of the P3,P4,P5 protection are the same as the outdoor unit,please refer to the outdoor trouble-shooting.

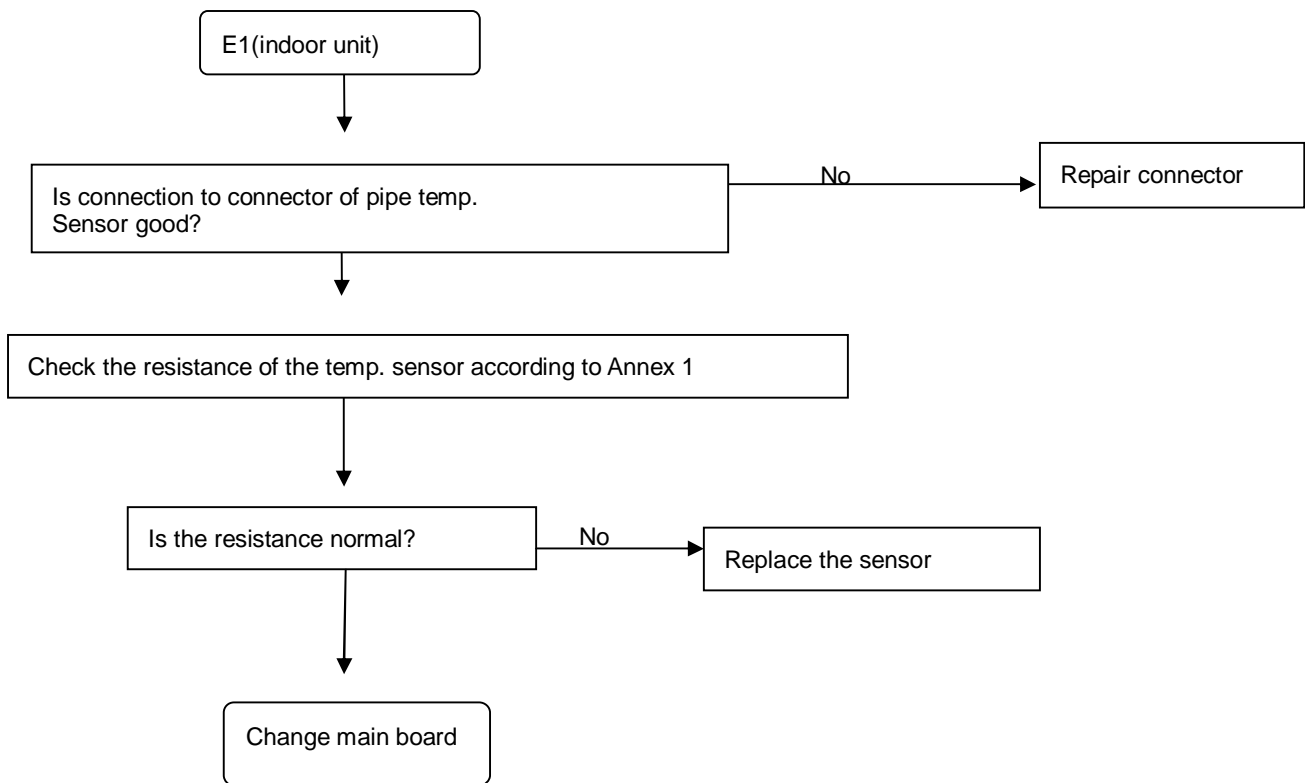
Outdoor unit's LED indication

Display	Explanation
E0	EEPROM error
E1	No 1 Indoor units pipe temp. Sensor or connector of pipe temp. sensor is defective
E2	No 2 Indoor units pipe temp. Sensor or connector of pipe temp. sensor is defective
E3	No 3 Indoor units pipe temp. Sensor or connector of pipe temp. sensor is defective
E4	Outdoor temp. Sensor or connector of temp. sensor is defective
E5	Compressor voltage protection
E6	No 4 Indoor units pipe temp. Sensor or connector of pipe temp. sensor is defective
E7	Communication malfunction between outdoor IC and DSP
P0	Compressor discharge temperature protection
P1	High pressure protection
P2	Low pressure protection
P3	Compressor current protection
P4	Module protection
P5	Outdoor low temp. protection
P6	Condenser high-temperature protection
P7	reserve
P8	reserve

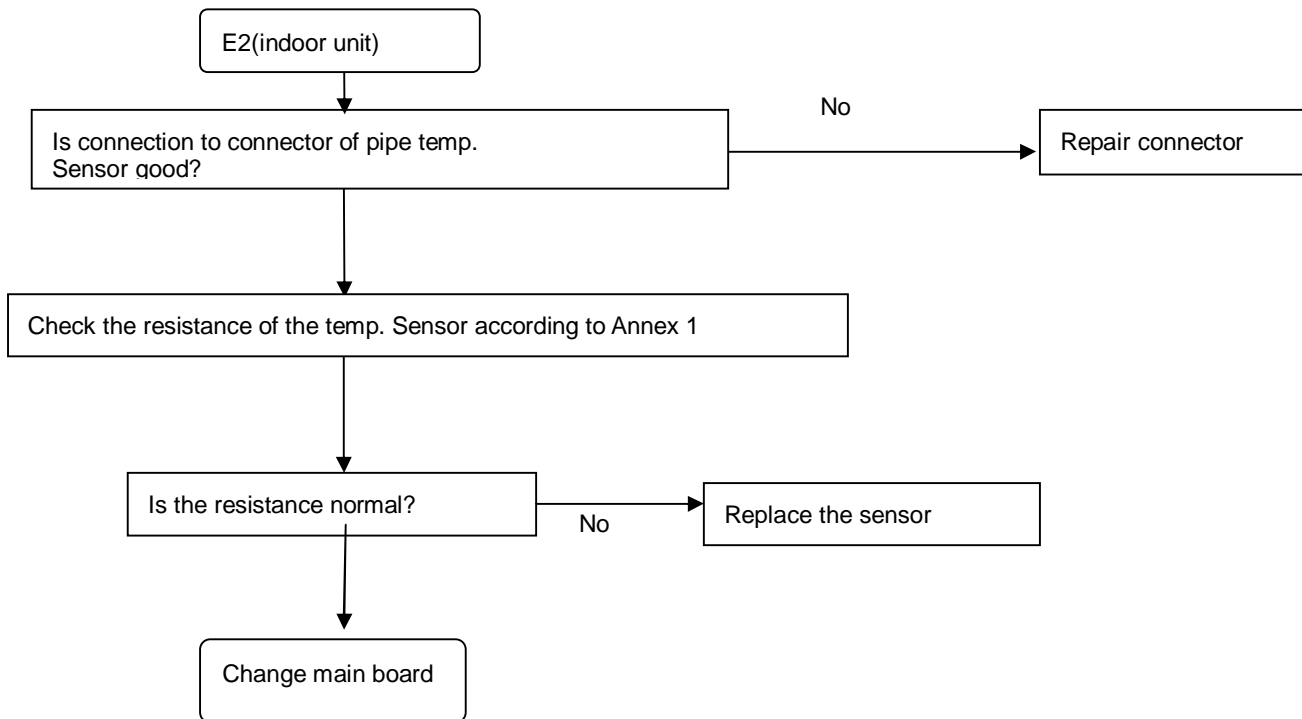
Display	Malfunction or Protection
E0	EEPROM Malfunction



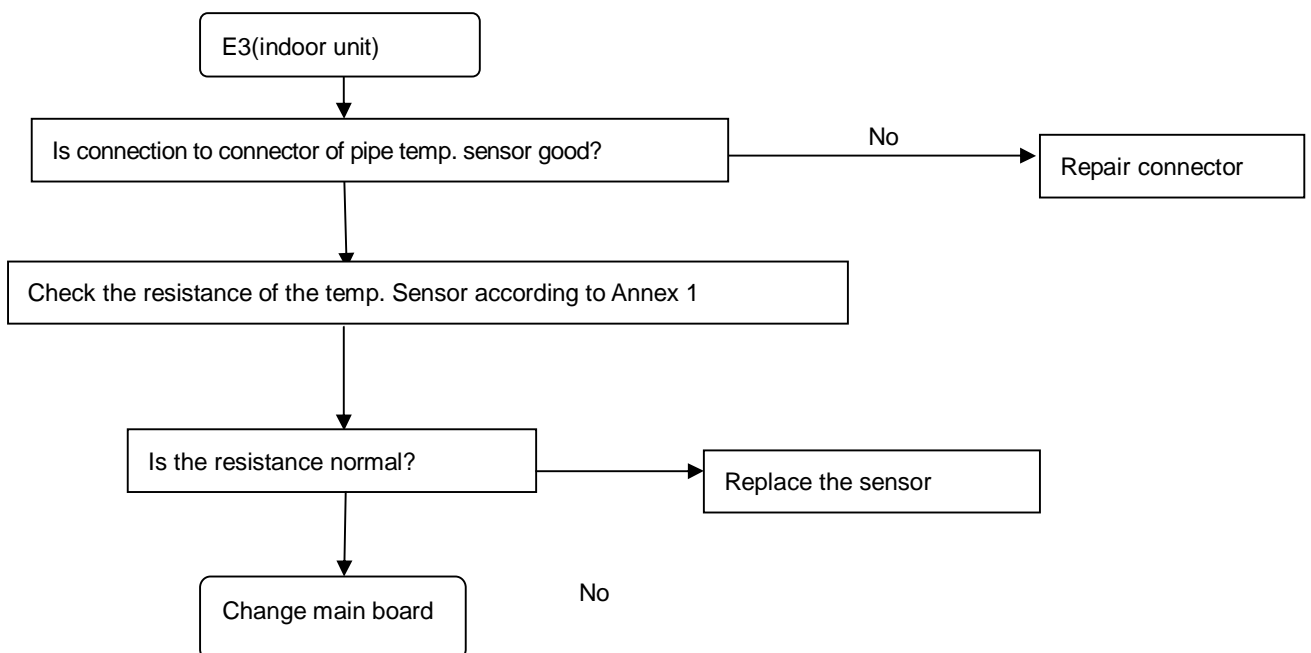
Display	Malfunction or Protection
E1	No 1 Indoor units pipe temp. Sensor or connector of pipe temp. sensor is defective



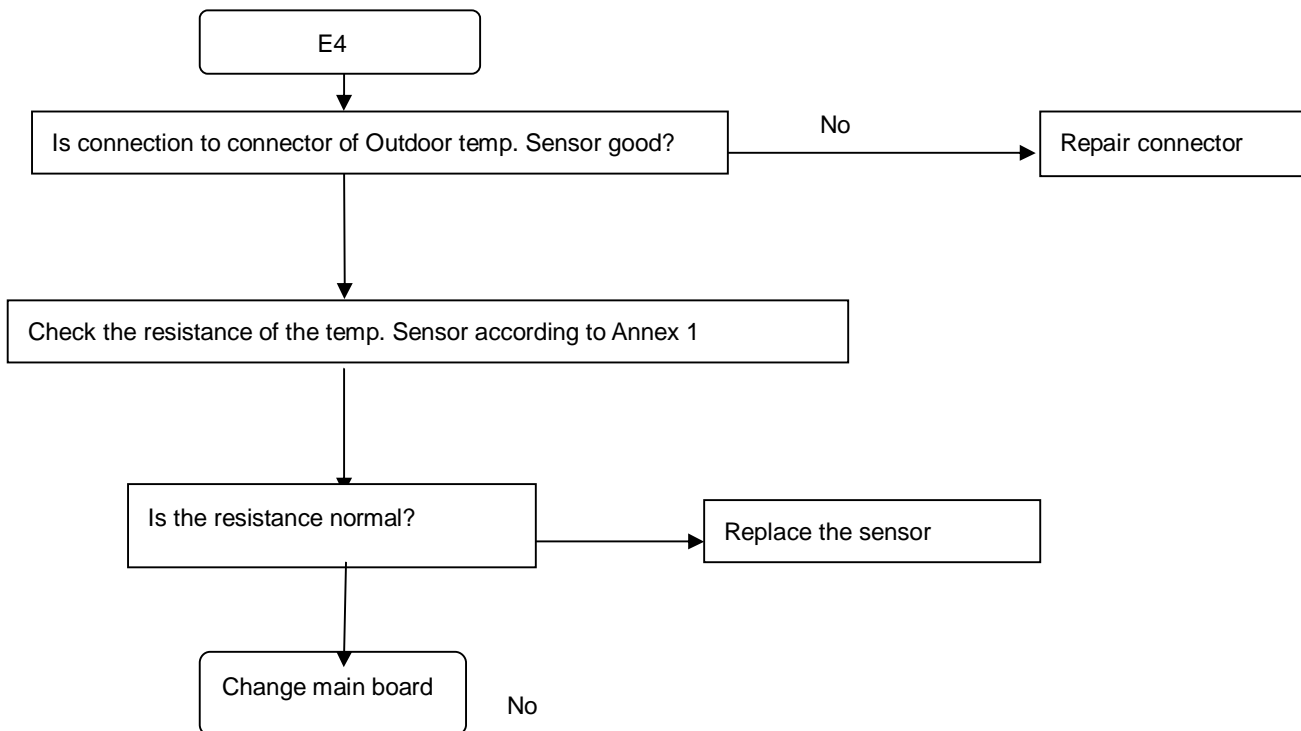
Display	Malfunction or Protection
E2	No 2 Indoor units pipe temp. Sensor or connector of pipe temp. sensor is defective



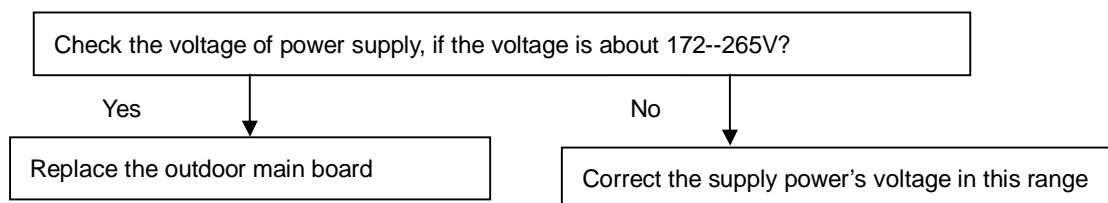
Display	Malfunction or Protection
E3	No 3 Indoor units pipe temp. Sensor or connector of pipe temp. sensor is defective



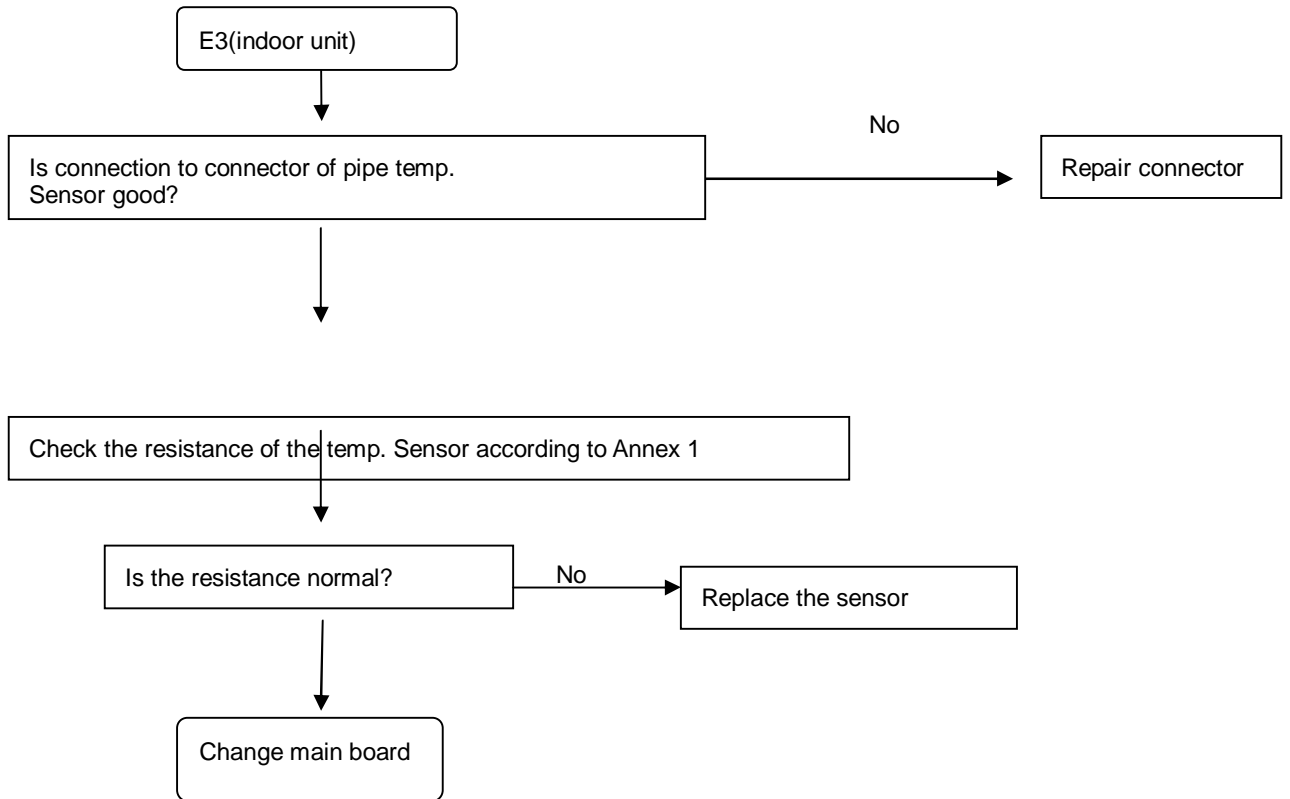
Display	Malfunction or Protection
E4	Outdoor temp. Sensor or connector of temp. sensor is defective



Display	Malfunction or Protection
E5	Compressor Voltage protection



Display	Malfunction or Protection
E6	No 4 Indoor units pipe temp. Sensor or connector of pipe temp. sensor is defective

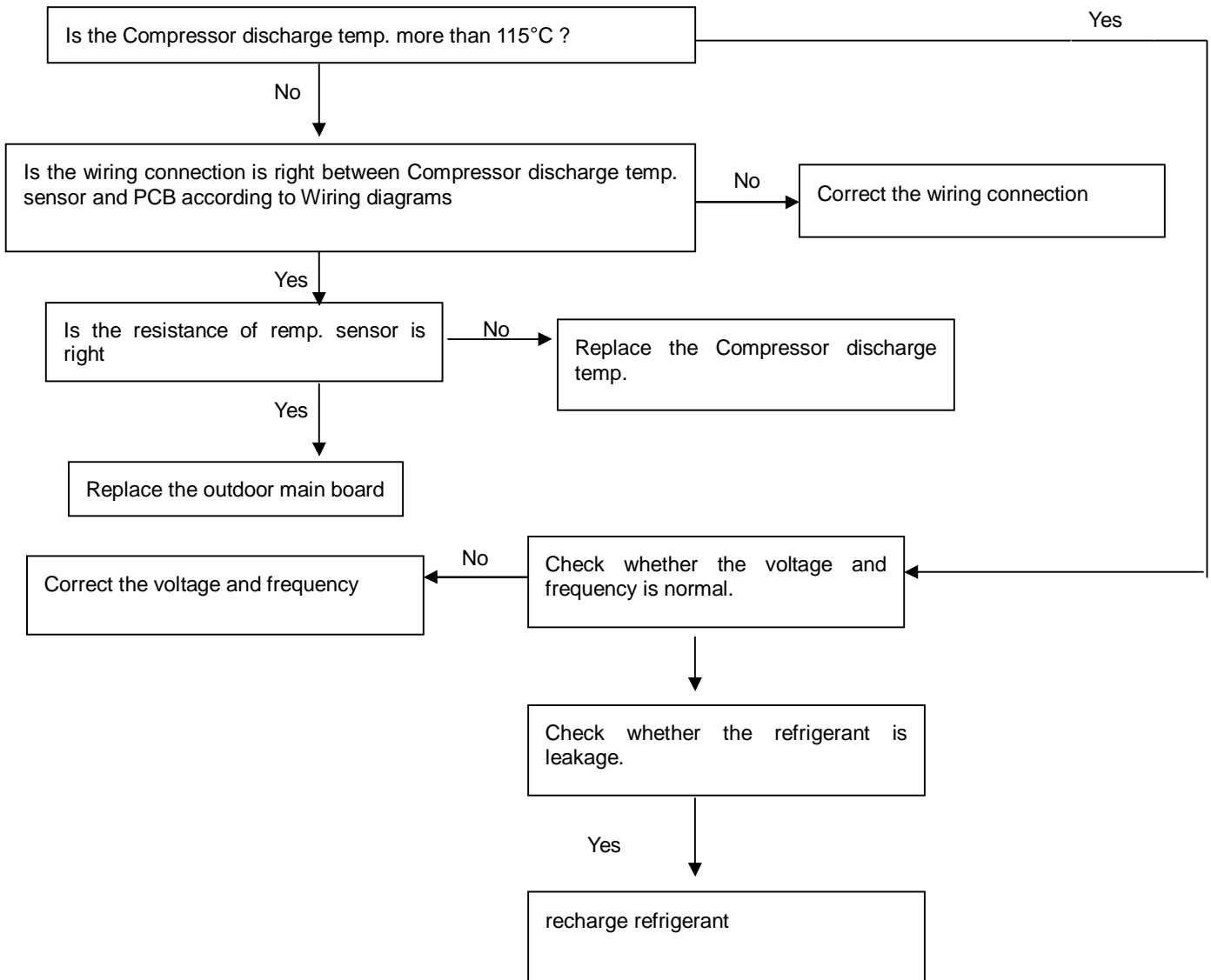


Display	Malfunction or Protection
E7	Communication malfunction between outdoor IC and DSP

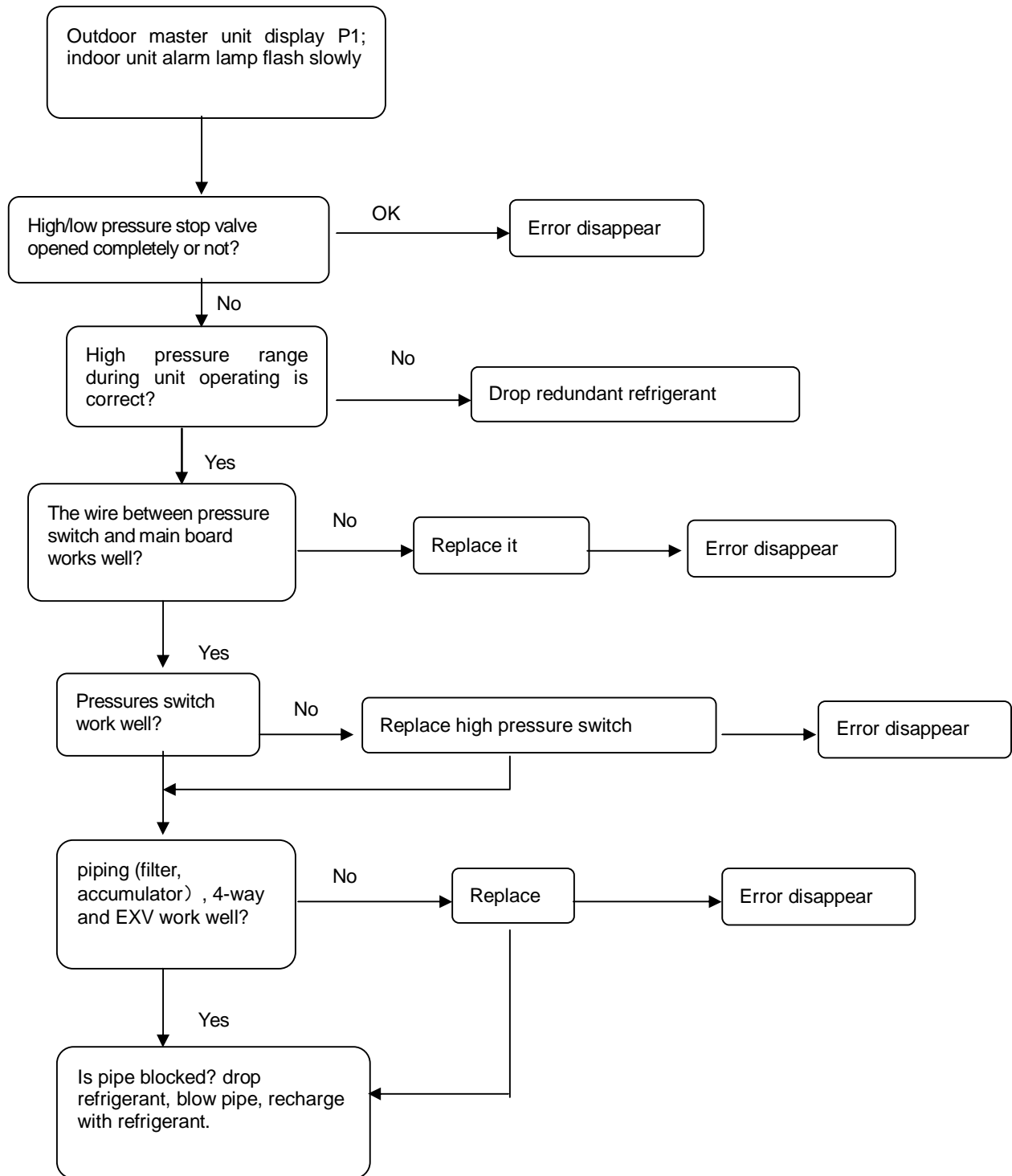


Display	Malfunction or Protection
P0	Compressor discharge temperature protection

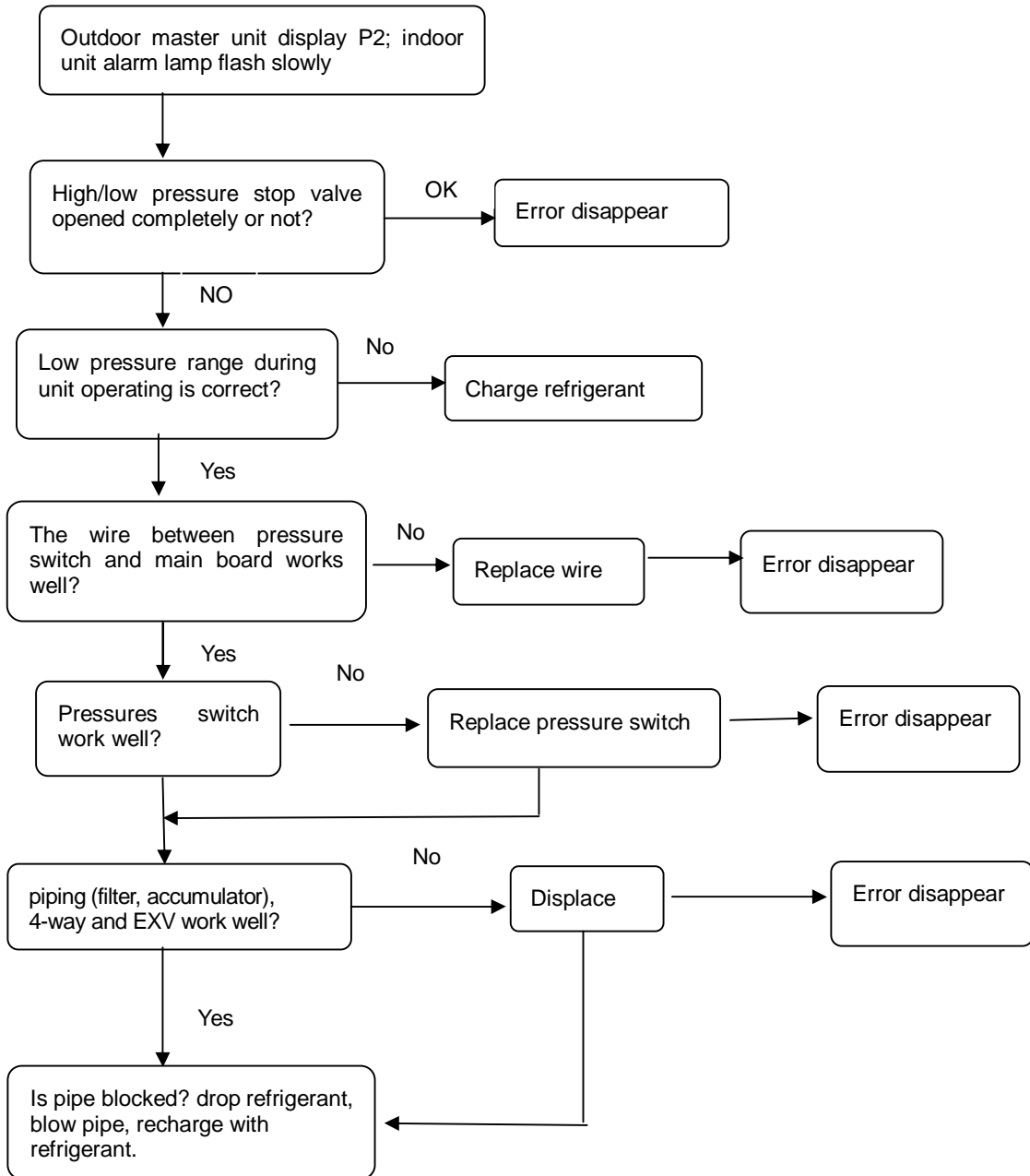
When Compressor discharge temp. is more than 115°C, the unit will stop, and unit runs again when Compressor discharge temp. less than 90°C.



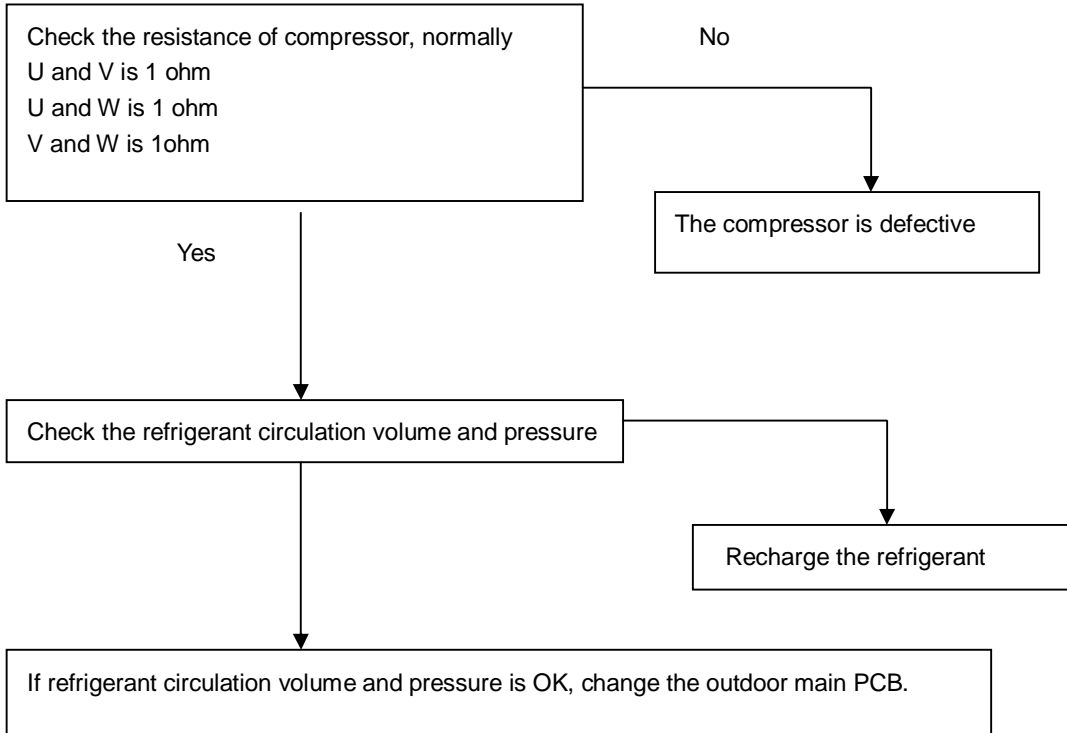
Display	Malfunction or Protection
P1	High pressure protection



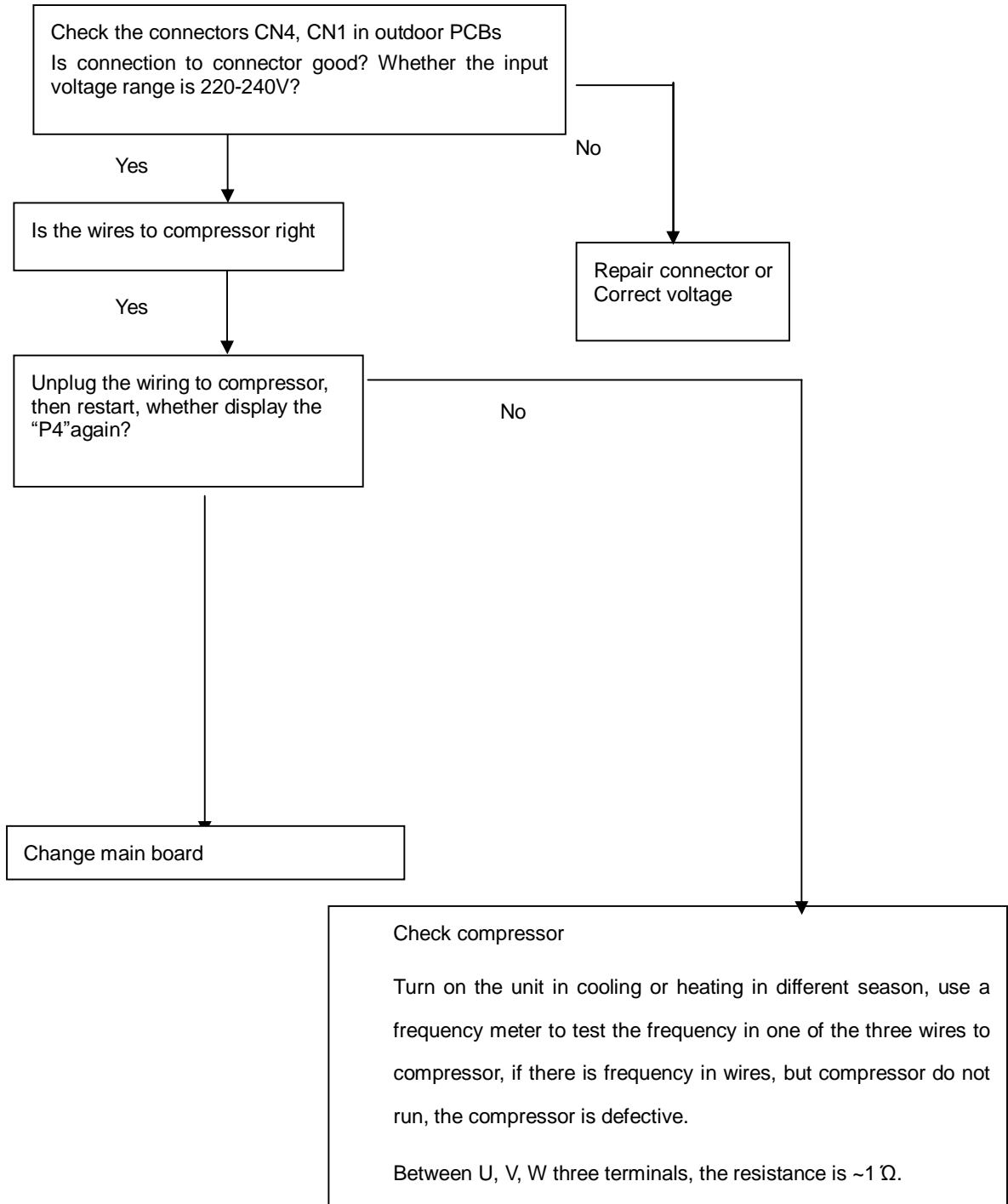
Display	Malfunction or Protection
P2	Low pressure protection



Display	Malfunction or Protection
P3	Compressor current protection

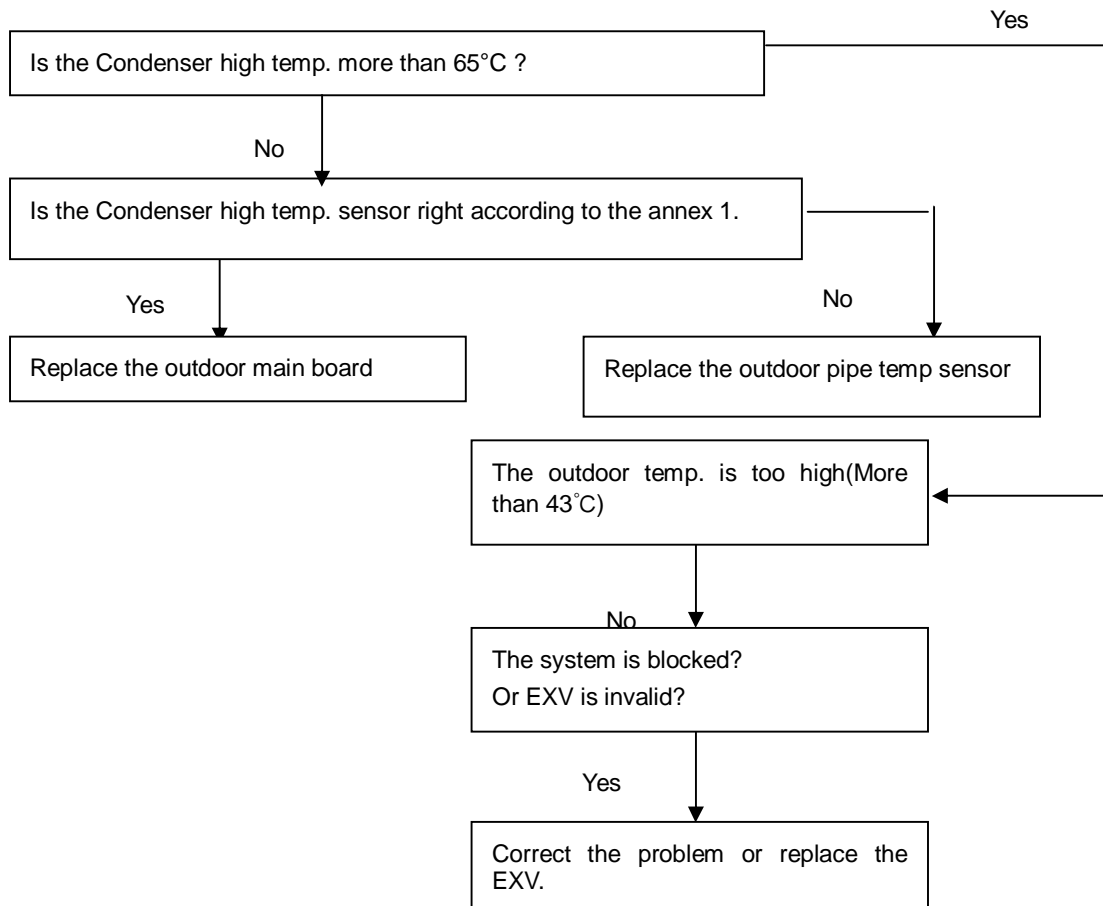


Display(LED flashes for thirteen times)	Malfunction or Protection
P4	Module protection



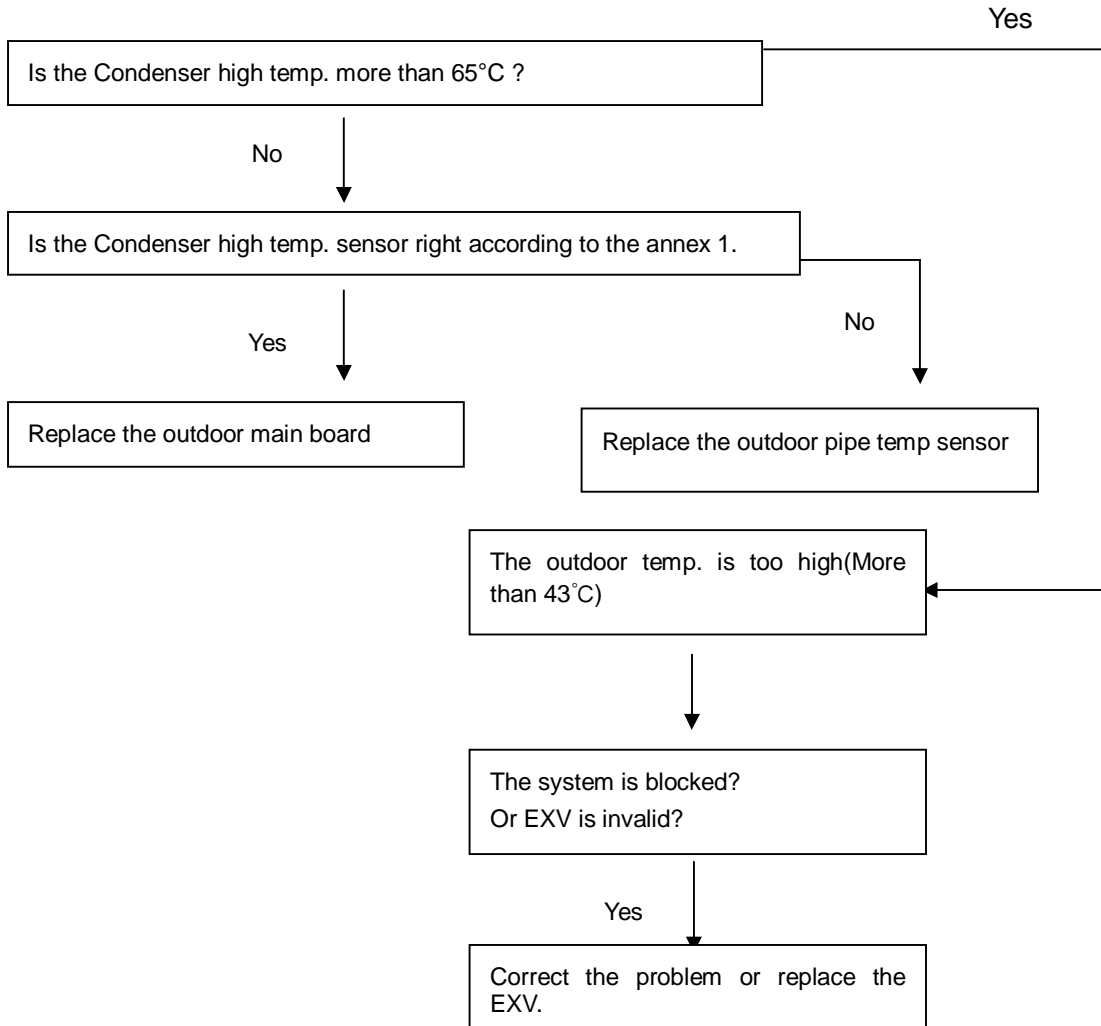
Display	Malfunction or Protection
P5	Outdoor low temperature protection

When outdoor temp. is lower than -15°C for more than 1 hour, the unit will stop, when the outdoor temp. is higher than -12°C for more than 10 minutes and the compressor has stopped for more than 1 hour, or the outdoor temp. is higher than 5°C for more than 10 minutes, the unit will be started again.



Display	Malfunction or Protection
P6	Condenser high temperature protection

When Condenser high temp. is more than 65°C, the unit will stop, and unit runs again when outdoor pipe temp. less than 52°C.



- Remark:**
1. Test digital discharge temperature, outdoor condenser temperature T3
 2. Test system pressure
 3. High digital discharge temperature is likely owing to the lack of refrigerant, air leakage or system blockade. Check the above items respectively to solve the problem.
 4. Condenser high temperature protection owes to the overcharge of refrigerant, air leakage or bad ventilation and heat-emission conditions.